



# INDOFINE Chemical Company, Inc.

121 Stryker Lane, Bldg. 30, Suite 1 • Hillsborough, NJ 08844 • U.S.A.

Phone: (908) 359-6778 • FAX: (908) 359-1179

website: [www.indofinechemical.com](http://www.indofinechemical.com)

e-mail: [chemical@indofinechemical.com](mailto:chemical@indofinechemical.com)

31-1202-0 2-Monolaurin (95-99%)

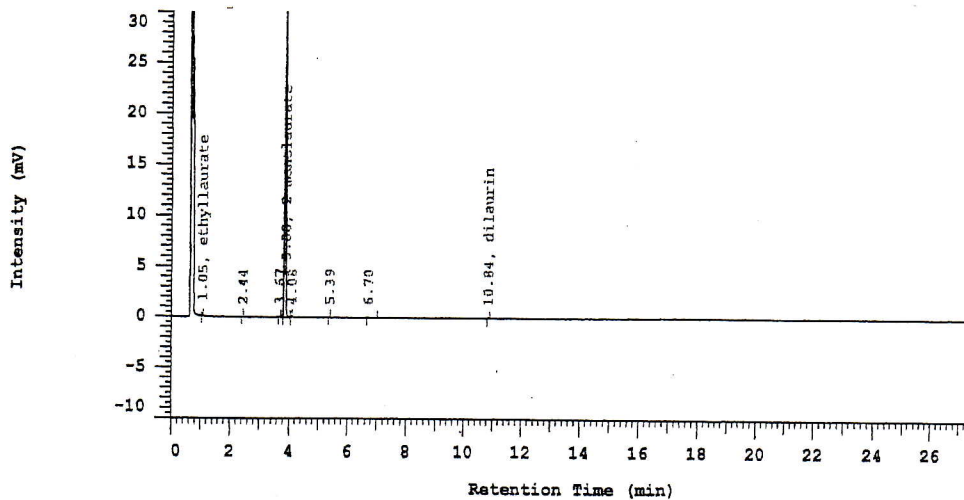
## GC Report : 2-Monolaurin

Analyzed: 12-20-06 09:52 AM

Lot no: H 432:12

100 mg

Injection from vial: 1 of 2



No.	Name	RT	Area	Area %
1	ethylaurate	1,05	313	0,279
2		2,44	62	0,055
3		3,67	115	0,103
4	2-monolaurate	3,88	111203	98,791
5		4,08	161	0,144
6		5,39	47	0,043
7		6,7	398	0,354
8	dilaurin	10,84	261	0,232
			112560	100